

WHEEL ALIGNER



IMAGING WHEEL ALIGNMENT SYSTEMS

High-resolution imaging technology delivers speed and accuracy

SERIES **V2200**

JohnBean

V2200

IMAGING WHEEL ALIGNMENT SYSTEMS

HIGHLY ACCURATE WHEEL ALIGNMENT SYSTEMS



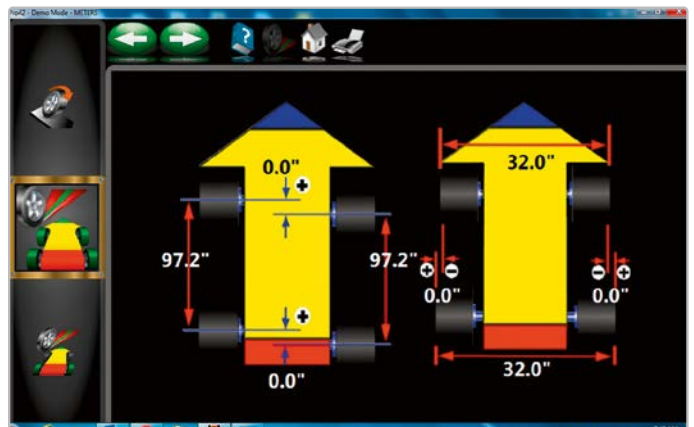
VERSATILE, ACCURATE HARDWARE

- High-resolution cameras produce accurate, live alignment readings and diagnostic data
- Passive front and rear XD targets improve durability with no electronics to damage
- Advanced XD targets and AC100 clamps are lightweight, durable and impact resistant

STANDARD DIMENSIONING AND PRODUCTIVITY FEATURES OF PRO42 SILVER SOFTWARE

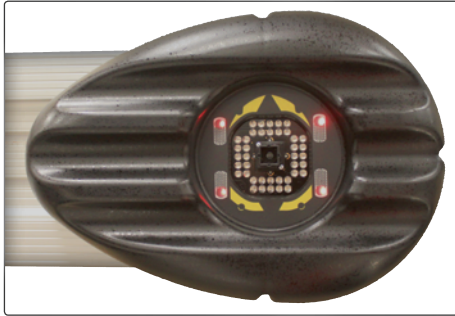
- Vehicle track width and wheel base
- Individual wheel side set and set-back
- EZ-TOE* for adjusting without using the steering wheel holder
- Guided adjustments of single tie rod, drag link and cradle

*Patented and/or patent-pending features



THE V2200 WHEEL ALIGNMENT SYSTEM PROVIDES CORE FEATURES FOR THE ALIGNMENT PROFESSIONAL

Patented imaging technology provides accurate and real-time measurements that improves productivity. User-friendly features such as EZ-TOE*, VODI* and an extensive vehicle specification database delivers customer satisfaction, ease of use and accuracy.



RIDE HEIGHT* MEASUREMENT

Manual ride height to obtain proper alignment specs for those vehicles requiring it

EZ-TOE*

Turn the front wheels and access difficult adjustment points while still displaying centred toe readings

USER-FRIENDLY INTERFACE

Use available step-by-step instructions as a guide for completing even the most complex tasks

MANUFACTURER SPECS

Extensive OEM specs allow quick and accurate vehicle selection

AC100 UNIVERSAL WHEEL CLAMPS



VODI™

Vehicle Orientation Directional Indicator* - guides the technician through the measurement process

HELP VIDEOS

View detailed videos of how to make needed adjustments to complete even the most complex task

FAST AND EASY TO USE

- Self-centring design for accurate measurement of vehicle dimensions
- Two-sided claws eliminate accessories and allow reliable clamping even over hub caps
- Accessories available to accommodate larger wheels

*Patented and/or patent-pending features

SPECIFICATIONS AND ACCESSORIES

SPECIFICATIONS

Track width	122 cm - 244 cm
Wheel Base	201 cm - 457 cm
Shipping weight	227 kg
Power requirements	230 V 1ph 50-60 Hz

Specifications AC100

Wheel size	11" - 22" (29.94 - 55.88 cm)
Weight	4.9 - 5.2 kg
Construction	Cast aluminium

Standard accessories

Wheel clamps & targets
Steering wheel holder
Brake pedal depressor
Two wheel chocks
Printer

OPTIONAL ACCESSORIES

Drive-on camera aid:
EAK0289J91A

AC100 universal wheel clamp
extension kit:
30926

Dual tall support kit:
EAK0289J80A

Centre tall support kit:
4031236

Dual short support kit:
EAK0289J81A

Centre short support kit:
4031234

Tilt camera beam:
4031154

EMEA-JA

Snap-on Equipment s.r.l. - Via Prov. Carpi, 33 - 42015 Correggio (RE)
Phone: +39 0522 733-411 - Fax: +39 0522 733-479 - www.johnbean-europe.com

Austria

Snap-on Equipment Austria GmbH - Hauptstrasse 24/Top 14 - A-2880 St. Corona/Wechsel (RE)
Phone: +43 1 865 97 84 - Fax: +43 1 865 97 84 29 - www.johnbean-europe.com

France

Snap-on Equipment France - ZA du Vert Galant -15, rue de la Guivernone BP 97175
Saint-Ouen-l'Aumône - 95056 Cergy-Pontoise CEDEX
Phone: +33 134 48 58-78 - Fax: +33 134 48 58-70 - www.johnbean-france.fr

Germany

Snap-on Equipment GmbH - Konrad-Zuse-Straße 1 - 84579 Unterneukirchen
Phone: +49 8634 622-0 - Fax: +49 8634 5501 - www.johnbean-deutschland.com

Italy

Snap-on Equipment s.r.l. - Via Prov. Carpi, 33 - 42015 Correggio (RE)
Phone: +39 0522 733-411 - Fax: +39 0522 733-410 - www.johnbean-italia.com

United Kingdom

Snap-on Equipment Ltd. - Unit 17 Denney Road, King's Lynn - Norfolk PE30 4HG
Phone: +44 118 929-6811 - Fax: +44 118 966-4369 - www.snapon-equipment.co.uk

