

# WHEEL ALIGNER



## IMAGING WHEEL ALIGNMENT SYSTEMS

High-resolution imaging technology  
delivers speed and accuracy

SERIES **V2400**

**JohnBean**

# V2400

## FULLY FEATURED, HIGHLY ACCURATE WHEEL ALIGNMENT SYSTEMS

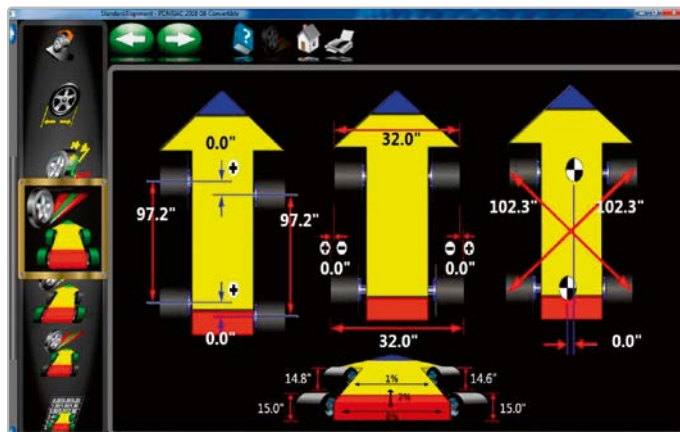
### VERSATILE, ACCURATE HARDWARE

- High-resolution cameras produce accurate, live alignment readings and diagnostic data
- Passive front and rear XD targets improve durability with no electronics to damage
- Advanced XD targets and AC400 clamps are lightweight, durable and impact resistant

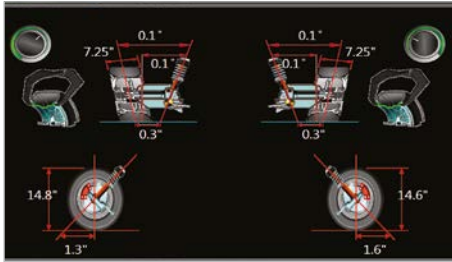
### ADVANCED DIMENSIONING\*

- Cross-diagonal\* measurements identify frame or structural damage
- Rolling Radius\* identifies mismatched tyre sizes - a potential cause of vehicle pulling and driver complaints

\*Patented and/or patent-pending features

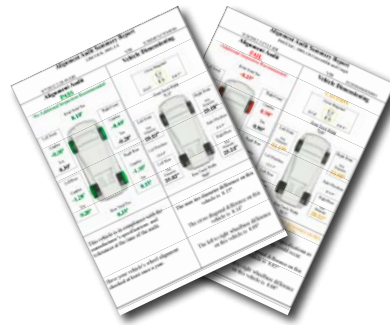


# V2400 EXCLUSIVE PLATINUM FEATURES



## ADVANCED MEASUREMENTS

- Measurement design for advanced suspension trouble-shooting and modified suspensions. Includes advanced ride height entry, ProAckermann, graphical caster trail, scrub radius and SAI



## QUICK ALIGNMENT CHECK

- Quickly identifies if a car needs alignment. Includes audit print-out to assist in the sale of services. Audit print-out allows dimensions and alignment to be shown on one simple print-out, perfect for collaboration with body shops

## AC400 CLAMPS WITH XD TARGETS

Weighing in at 3.13 kg (6.9 lbs) and measuring only 152 x 203 mm (6" x 8") in the front and rear, the AC400/XD package is the smallest and lightest we've ever made

## RIDE HEIGHT\* MEASUREMENT

Measure ride height and obtain proper alignment specs for those vehicles requiring it

## EZ-TOE\*

Turn the front wheels and access difficult adjustment points while still displaying centred toe readings

## USER-FRIENDLY INTERFACE

Use available step-by-step instructions as a guide for completing even the most complex tasks

## MANUFACTURER SPECS

Extensive OEM specs allow quick and accurate vehicle selection

## VODI™

Vehicle Orientation Directional Indicator\* - guides the technician through the measurement process

## HELPVIDEOS

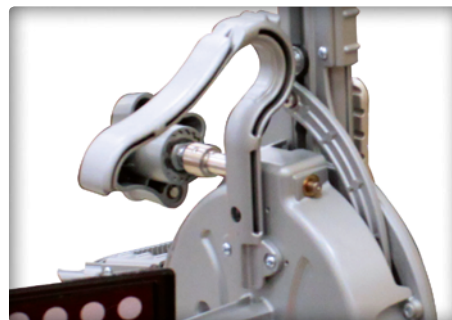
View detailed videos of how to make needed adjustments to complete even the most complex tasks

# AVAILABLE WITH THE JOHN BEAN AC400 QUICK WHEEL CLAMPS



## SECURE CLAMPING WITHOUT TOUCHING THE RIM

- Only the tyre is contacted
- Clutch limited clamping force ensures accurate and repeatable results
- Durable and lightweight magnesium construction
- Alternatively, AC100 universal wheel clamps made of cast aluminum, with no limitation on tyre diameter



## AC400: FAST AND EASY TO USE

- Clamping is accomplished with a single fast-action adjustment knob
- No accessories needed to accommodate the full range of tyre sizes
- Large, comfortable handle allows ergonomic use
- XD targets are lighter and take up less space than previous designs

\*Patented and/or patent-pending features

# SPECIFICATIONS AND ACCESSORIES

## SPECIFICATIONS

Track width	122 cm - 244 cm
Wheel Base	201 cm - 457 cm
Shipping weight	202 kg
Power requirements	230 V 1ph 50-60 Hz

### Specifications AC400

Tyre diameter	19" - 39" (48.3 cm - 99.1 cm)
Weight	3.3 kg
Clamping force	164.6 N
Construction	Cast magnesium

### Specifications AC100

Rim clamping range	11" - 22"
Weight	4.9 to 5.2 kg
Construction	Cast aluminium

### Standard accessories

Wheel clamps & targets
Steering wheel holder
Brake pedal depressor
Two wheel chocks
Printer

\* Standard with V2400 AC100

\*\* Standard with V2400 AC400

## OPTIONAL ACCESSORIES

AC100 universal wheel clamp kit\*:  
EAK0320J36A

AC400 wheel clamp accessory kit\*\*:  
EAK0320J35A

Mobility kit:  
EAK0320J78A

Drive-on camera aid:  
EAK0289J91A

AC400 hub adaptor kit for wheels-off  
alignment:  
EAK0222J83B

AC200 universal wheel clamp  
extension kit:  
EAK0268J62A

AC100 universal wheel clamp  
extension kit:  
30926

AC400 dual wheel adaptor kit:  
EAK0305J50A

Dual tall support kit:  
EAK0289J80A

Centre tall support kit:  
4031236

Dual short support kit:  
EAK0289J81A

Centre short support kit:  
4031234

Tilt camera beam:  
4031154

**EMEA-JA**  
Snap-on Equipment s.r.l. - Via Prov. Carpi, 33 - 42015 Correggio (RE)  
Phone: +39 0522 733-411 - Fax: +39 0522 733-479 - www.johnbean-europe.com

**Austria**  
Snap-on Equipment Austria GmbH - Hauptstrasse 24/Top 14 - A-2880 St. Corona/Wechsel (RE)  
Phone: +43 1 865 97 84 - Fax: +43 1 865 97 84 29 - www.johnbean-europe.com

**France**  
Snap-on Equipment France - ZA du Vert Galant - 15, rue de la Guivernone BP 97175  
Saint-Ouen-l'Aumône - 95096 Cergy-Pontoise CEDEX  
Phone: +33 134 48 58-78 - Fax: +33 134 48 58-70 - www.johnbean-france.fr

**Germany**  
Snap-on Equipment GmbH - Konrad-Zuse-Straße 1 - 84579 Unterneukirchen  
Phone: +49 8634 622-0 - Fax: +49 8634 5501 - www.johnbean-deutschland.com

**Italy**  
Snap-on Equipment s.r.l. - Via Prov. Carpi, 33 - 42015 Correggio (RE)  
Phone: +39 0522 733-411 - Fax: +39 0522 733-410 - www.johnbean-italia.com

**United Kingdom**  
Snap-on Equipment Ltd. - Unit 17 Denney Road, King's Lynn - Norfolk PE30 4HG  
Phone: +44 118 929-6811 - Fax: +44 118 966-4369 - www.snapon-equipment.co.uk

